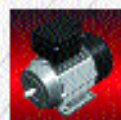
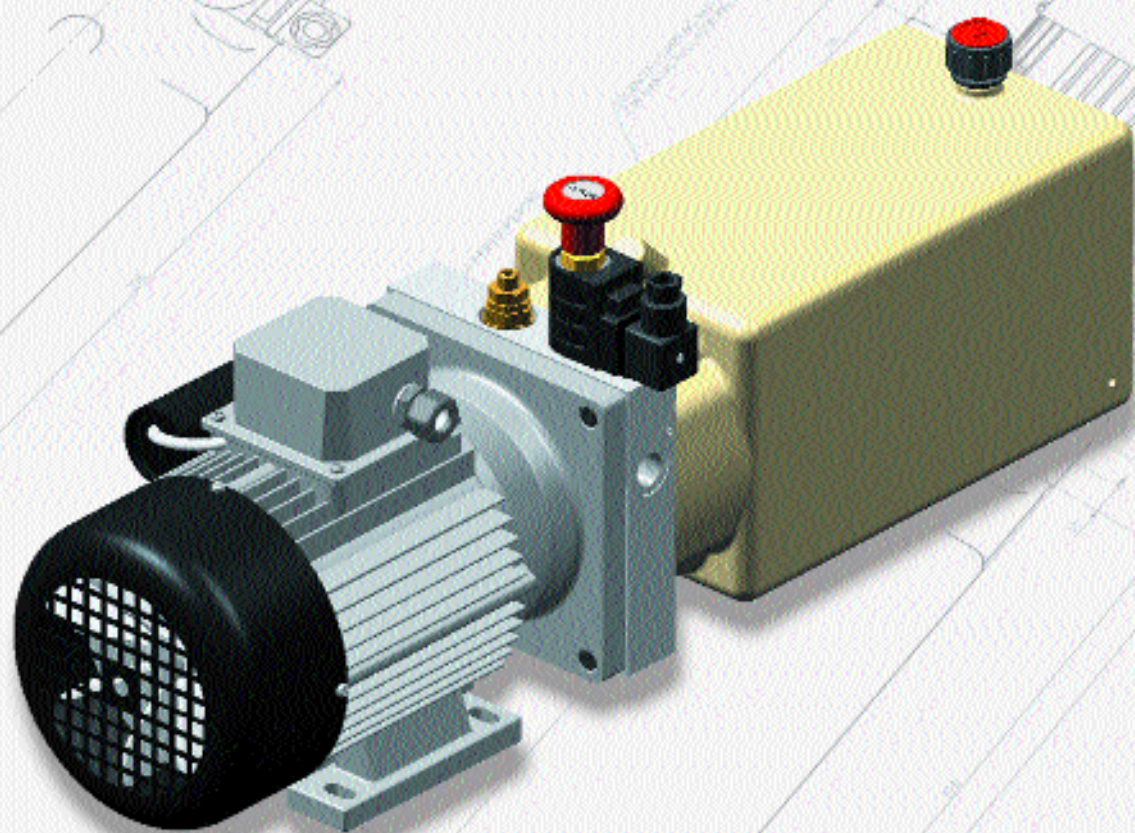




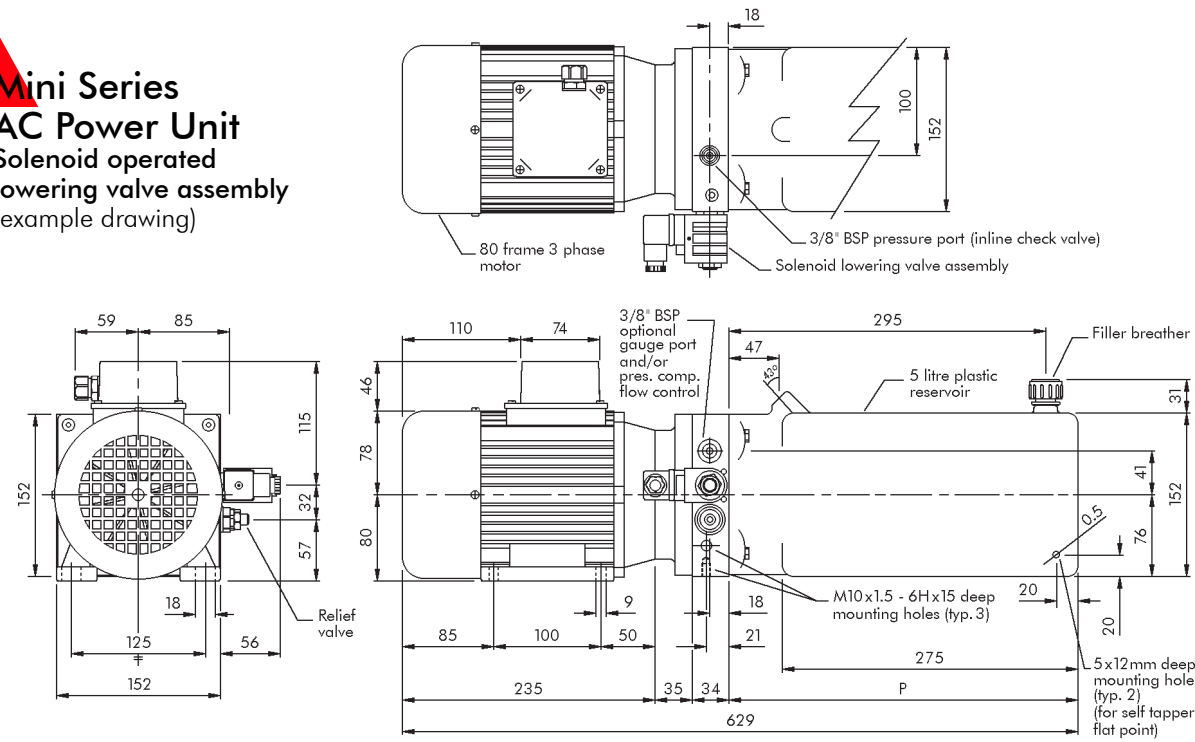
**RFP**



**HYDRAULIC  
POWER UNITS  
AC MINI SYSTEM**

Related Fluid Power Ltd. • Cuparmuir • Cupar • Fife • KY15 5SL • UK  
T: +44 (0)1334 655600 • F: +44 (0)1334 650006 • E: [sales@relatedfluidpower.com](mailto:sales@relatedfluidpower.com)

**Mini Series  
AC Power Unit  
Solenoid operated  
lowering valve assembly  
(example drawing)**



**Mini Series  
AC Power Unit  
'P+T' only assembly  
(example drawing)**

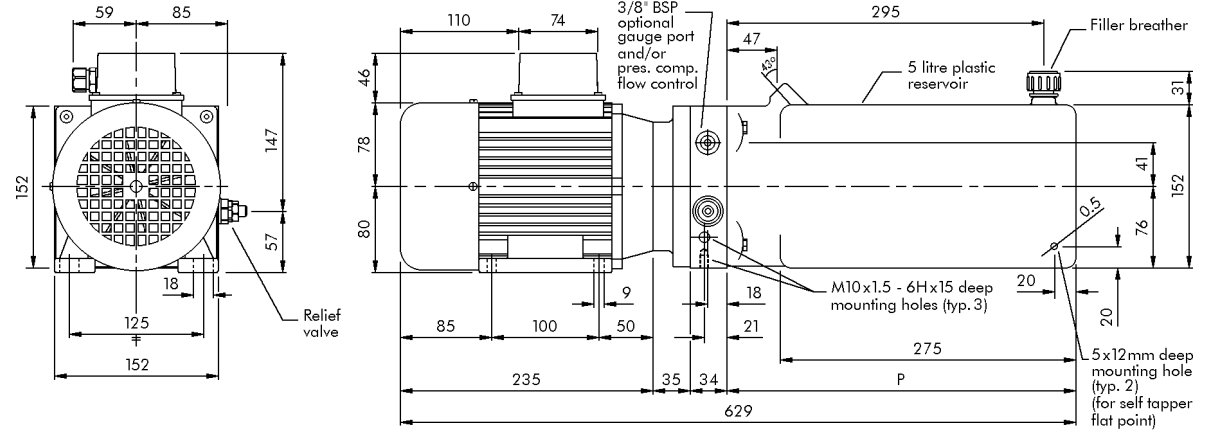
**Standard reservoir dimensions**

**Steel cylindrical  
Ø 140 mm**

Capacity	P
2 litres	160 mm
3 litres	217 mm
4 litres	280 mm
5 litres	343 mm
6 litres	406 mm

**Plastic square**

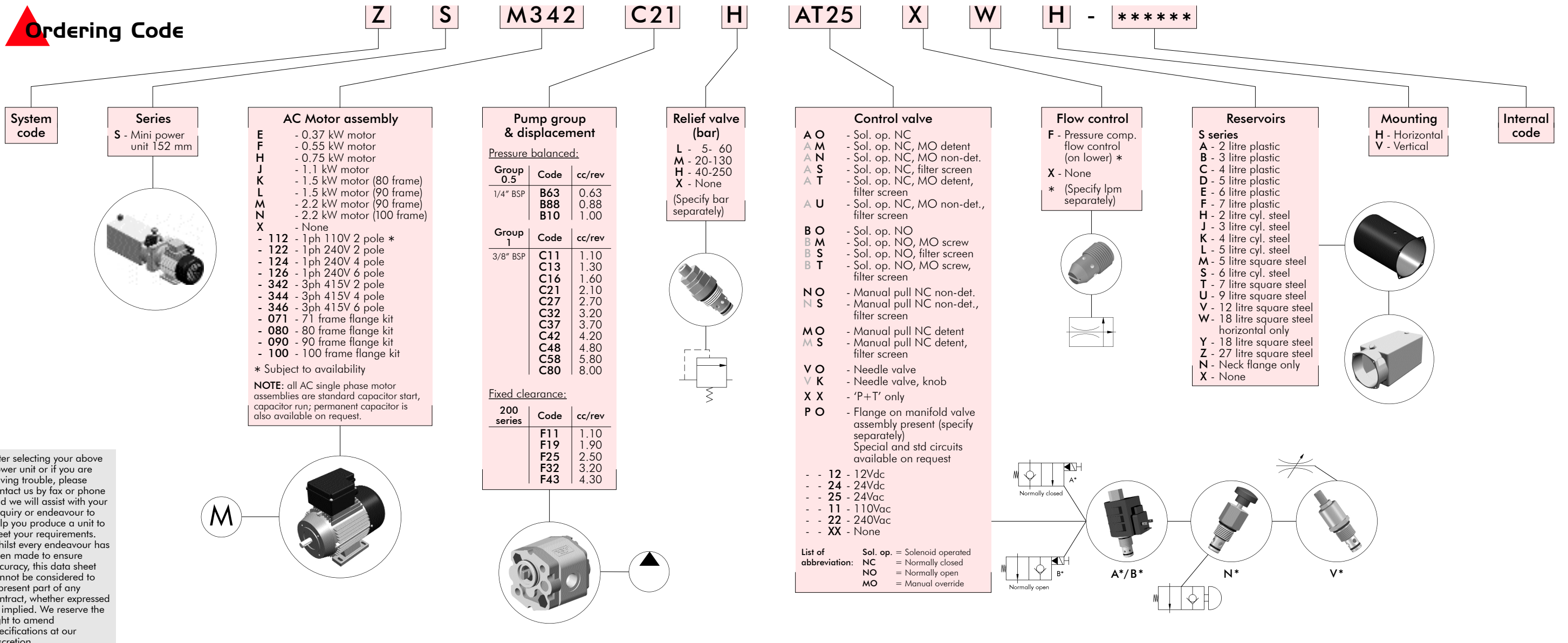
Capacity	P
2 litres	163 mm
3 litres	217 mm
4 litres	260 mm
5 litres	325 mm
6 litres	395 mm
7 litres	465 mm



**ORDERING EXAMPLE (as coded below)**

**Requirements:** 2.2kW, 3 phase, 415Vac, 50Hz, (2 pole) 3000 rpm motor, 2.1cc/rev pump, relief valve (setting specified separately) 24Vac solenoid operated lowering valve c/w manual override and filter screen, check valve, 18 litre rectangular horizontal reservoir, horizontally mounted power unit.

**Ordering Code**



After selecting your above power unit or if you are having trouble, please contact us by fax or phone and we will assist with your enquiry or endeavour to help you produce a unit to meet your requirements. Whilst every endeavour has been made to ensure accuracy, this data sheet cannot be considered to represent part of any contract, whether expressed or implied. We reserve the right to amend specifications at our discretion.

# Our Company

**Related Fluid Power Ltd** have 30 years experience in the design and manufacture of hydraulic controls and AC/DC power units for the mobile and industrial sectors. Operating from our factory in Cuparmuir, Fife (UK), we are constantly striving to improve and increase our production capacity; we also utilise the latest state of the art 2D and 3D CAD and CNC manufacturing capabilities.

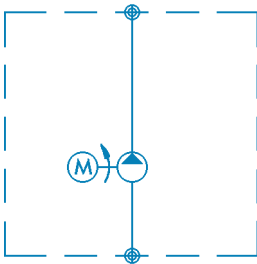
In the present industrial and mobile hydraulic industry, AC/DC hydraulic power units are providing companies with the flexibility to produce simple as well as complex systems with the greatest of ease. RFP can provide the industry with this flexibility and at the same time meet customer requirements efficiently and effectively.

Maintaining a close relationship with our customers, as well as an understanding of their needs, is a commitment equally important to us and helps to set us apart. This is why we have fostered and encouraged a development of skills so we can help our technical and sales people market our power units in the hydraulic industry.

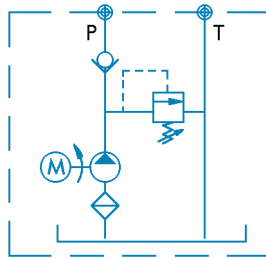
The Micro and Mini Series power units are self-contained motor-pump-reservoir systems offering a wide range of pump outputs and with optional cylindrical steel or rectangular plastic/steel reservoirs. The power units are available in DC or AC form and cover a standard motor range of 150W-800W DC, 0.37kW-4kW AC. Standard as well as custom controls, some of which are shown below.

## Standard Applications

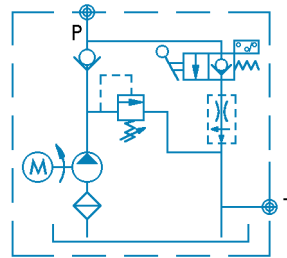
Motor/Pump unit



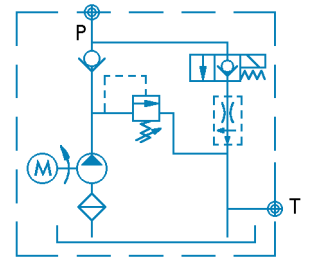
Pressure and return  
Relief valve, check valve



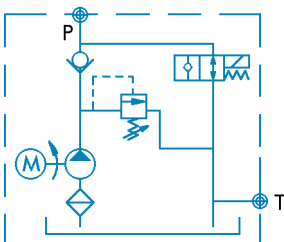
Manual lift, check & lower  
Relief valve, check valve  
\*\* optional flow control



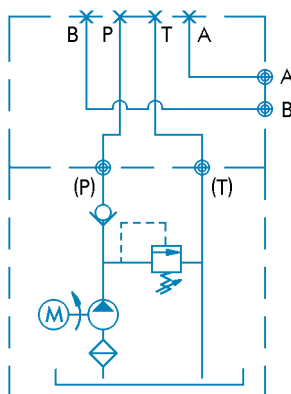
Solenoid/N.C. lift, check & lower  
relief valve, check valve  
\*\* optional flow control



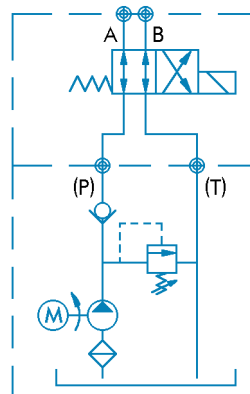
Solenoid/N.O. lift, check & lower  
relief valve, check valve  
\*\* optional flow control



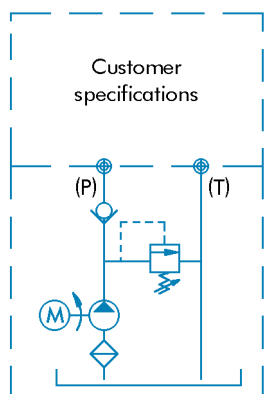
// Cetop 3, subplate



Solenoid, 2 position 4 way



Custom (please ask)



// Cetop 3, directional valve can be supplied if required

\*\* Flow control can be supplied in two options: 1. Fixed pressure compensated flow control (fitted internally)  
2. In-line adjustable flow control