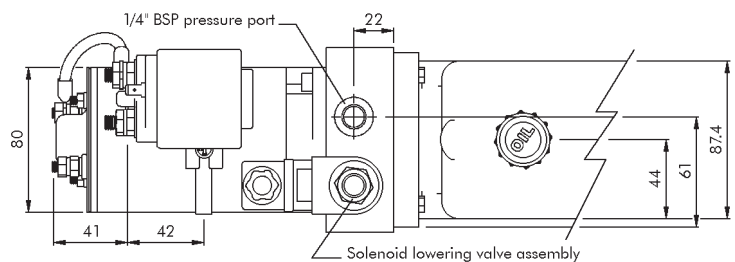


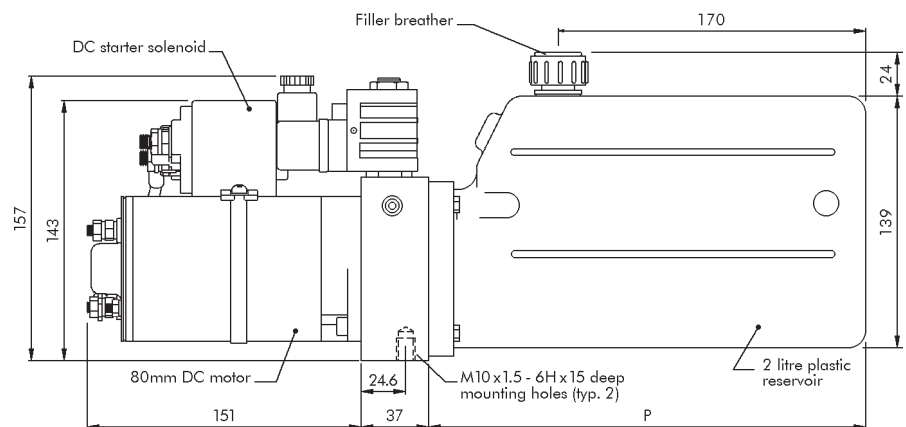
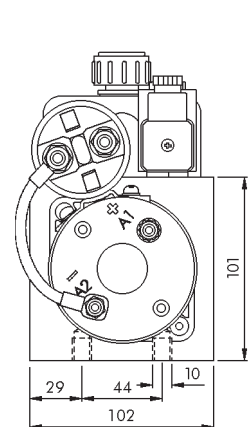
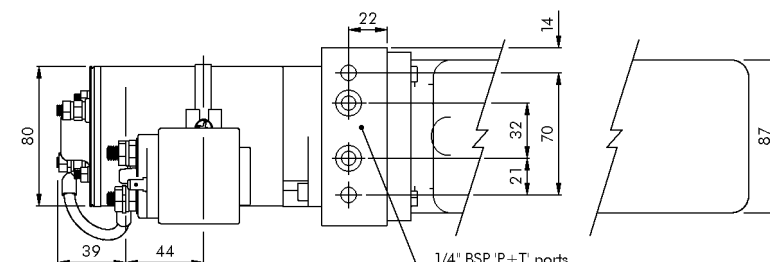
HYDRAULIC POWER UNITS DC MICRO SYSTEM

Related Fluid Power Ltd. • Cuparmuir • Cupar • Fife • KY15 5SL • UK
T: +44 (0)1334 655600 • F: +44 (0)1334 650006 • E: sales@relatedfluidpower.com

**Micro Series
DC Power Unit
Solenoid operated
lowering valve assembly
(example drawing)**

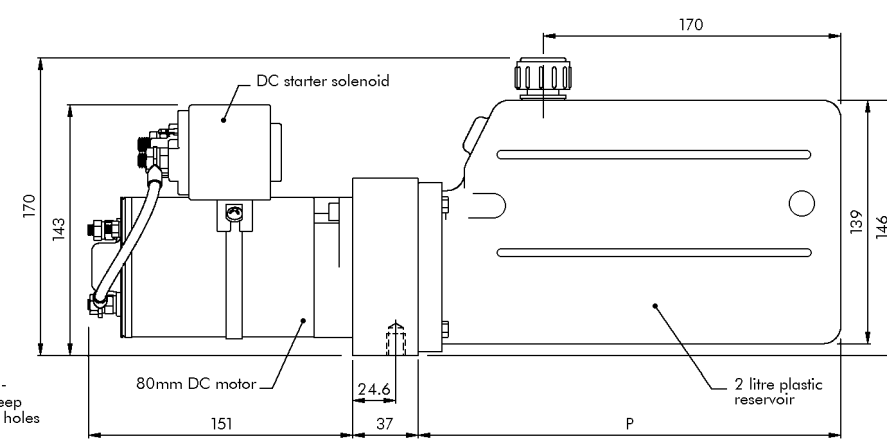
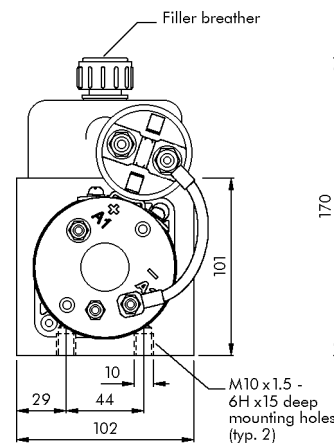


**Micro Series
DC Power Unit
'P+T' only assembly
(example drawing)**



**Standard reservoir
dimensions**

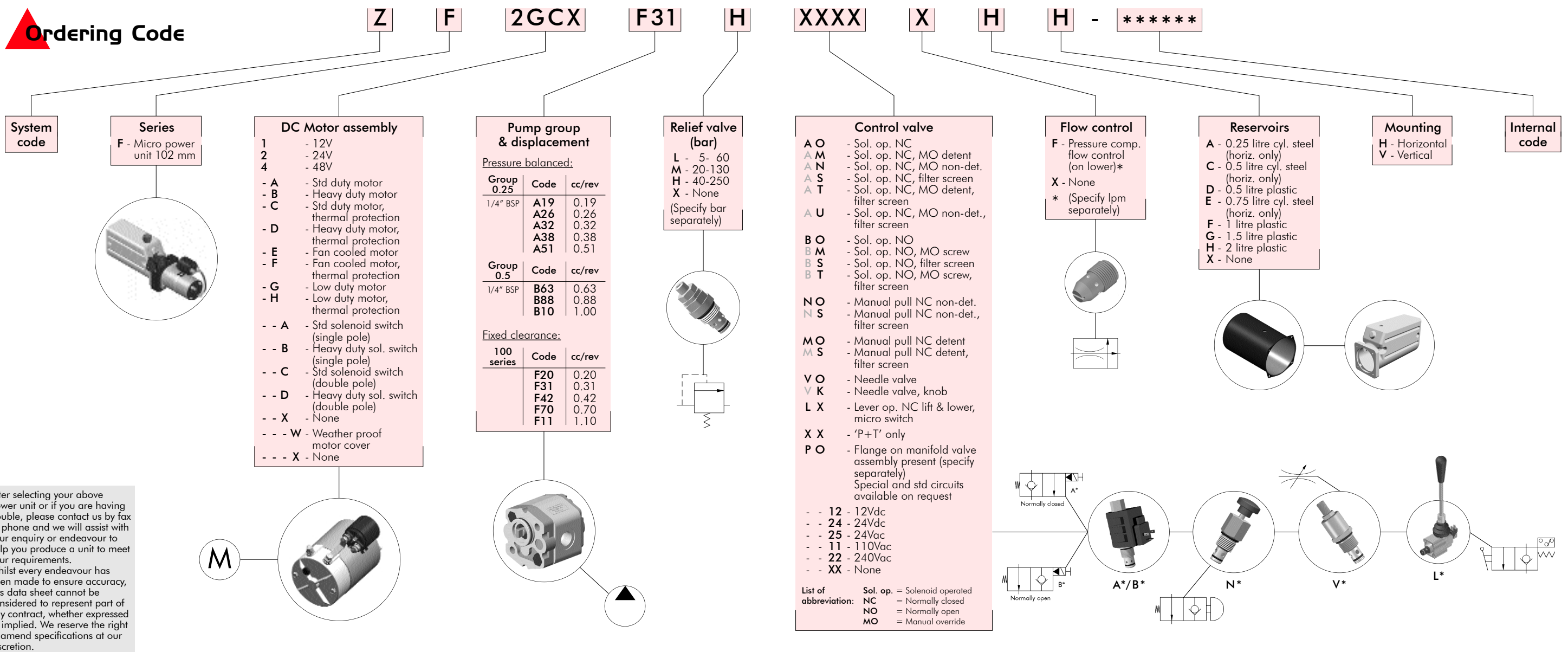
Steel cylindrical Ø 80 mm	
Capacity	P
0.25 litres	100 mm
0.50 litres	153 mm
0.75 litres	205 mm
Plastic	
Capacity	P
0.50 litres	89 mm
1.00 litres	140 mm
1.50 litres	190 mm
2.00 litres	241 mm



ORDERING EXAMPLE (as coded below)

Requirements: 24Vdc low duty motor, starter solenoid, 0.31 cc/rev pump, relief valve (setting specified separately), 'P+T' ports only, check valve, 2 litre plastic reservoir, horizontally mounted power unit.

Ordering Code



Our Company

Related Fluid Power Ltd have 30 years experience in the design and manufacture of hydraulic controls and AC/DC power units for the mobile and industrial sectors. Operating from our factory in Cuparmuir, Fife (UK), we are constantly striving to improve and increase our production capacity; we also utilise the latest state of the art 2D and 3D CAD and CNC manufacturing capabilities.

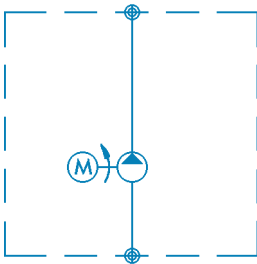
In the present industrial and mobile hydraulic industry, AC/DC hydraulic power units are providing companies with the flexibility to produce simple as well as complex systems with the greatest of ease. RFP can provide the industry with this flexibility and at the same time meet customer requirements efficiently and effectively.

Maintaining a close relationship with our customers, as well as an understanding of their needs, is a commitment equally important to us and helps to set us apart. This is why we have fostered and encouraged a development of skills so we can help our technical and sales people market our power units in the hydraulic industry.

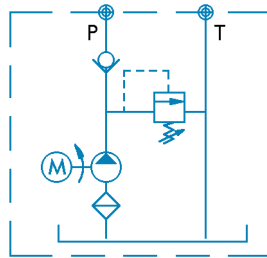
The Micro and Mini Series power units are self-contained motor-pump-reservoir systems offering a wide range of pump outputs and with optional cylindrical steel or rectangular plastic/steel reservoirs. The power units are available in DC or AC form and cover a standard motor range of 150W-800W DC, 0.37kW-4kW AC. Standard as well as custom controls, some of which are shown below.

Standard Applications

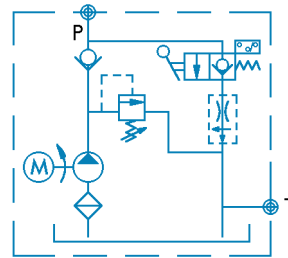
Motor/Pump unit



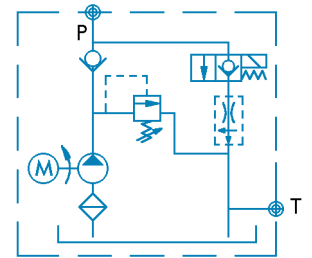
Pressure and return
Relief valve, check valve



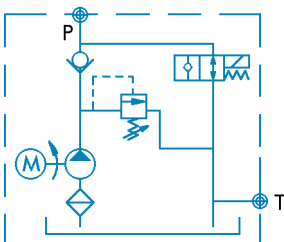
Manual lift, check & lower
Relief valve, check valve
** optional flow control



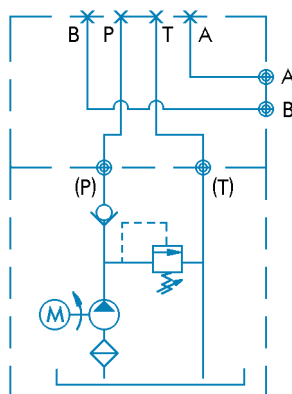
Solenoid/N.C. lift, check
& lower
relief valve, check valve
** optional flow control



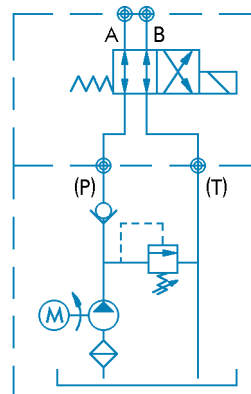
Solenoid/N.O. lift, check
& lower
relief valve, check valve
** optional flow control



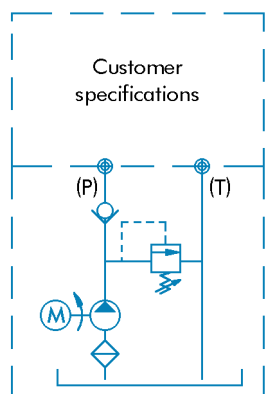
// Cetop 3, subplate



Solenoid, 2 position 4 way



Custom (please ask)



// Cetop 3, directional valve can be supplied if required

** Flow control can be supplied in two options: 1. Fixed pressure compensated flow control (fitted internally)
2. In-line adjustable flow control