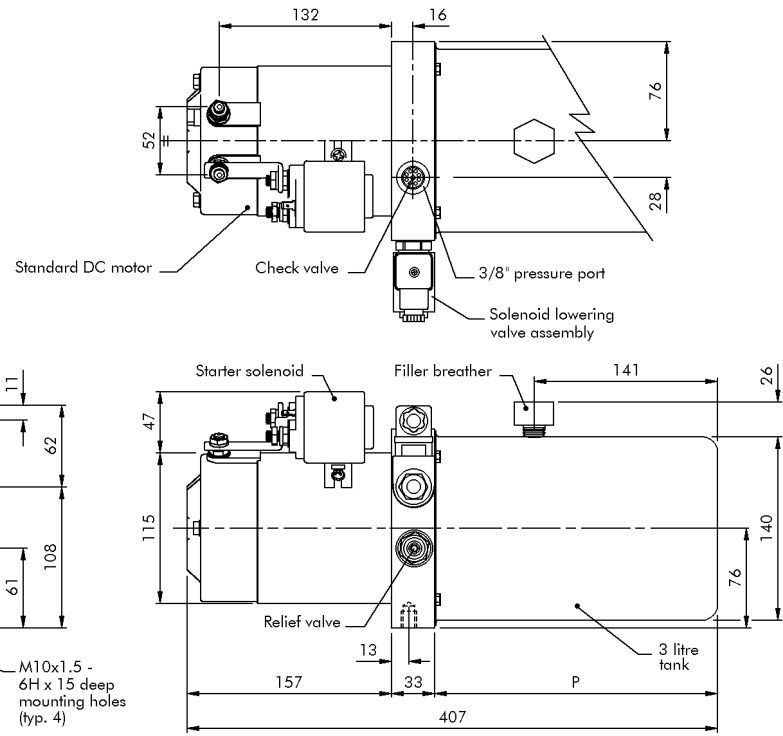
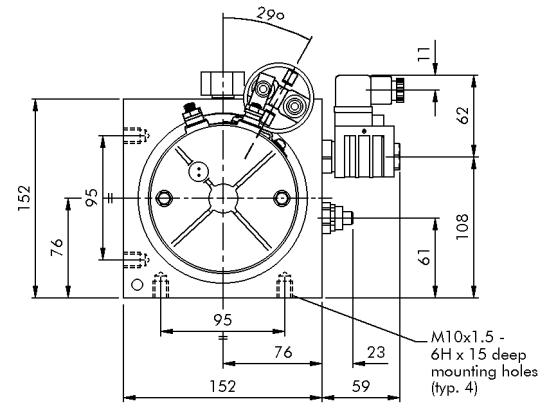


HYDRAULIC POWER UNITS DC MINI SYSTEM

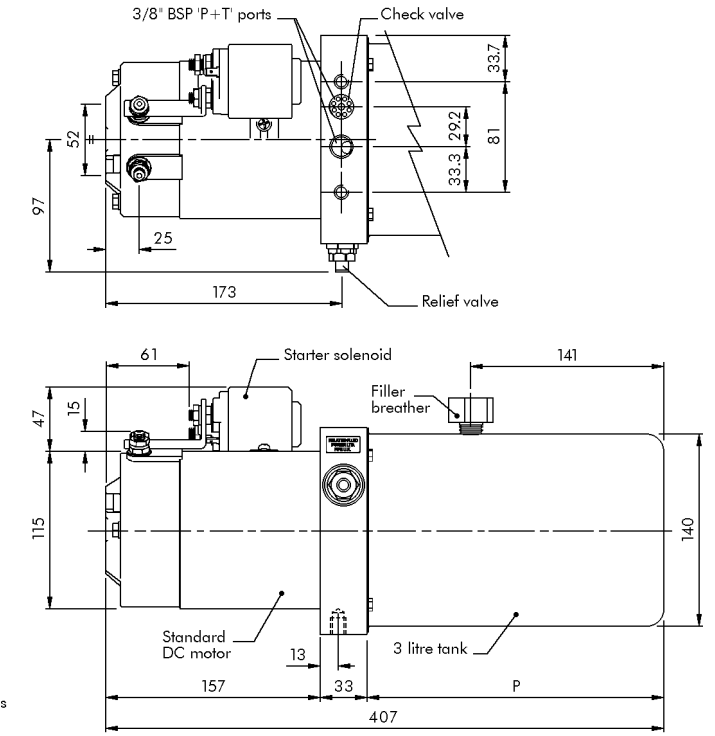
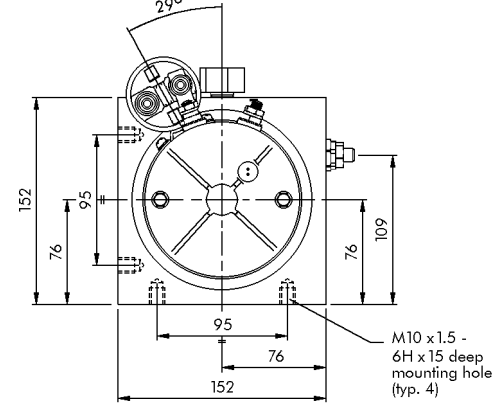
Related Fluid Power Ltd. • Cuparmuir • Cupar • Fife • KY15 5SL • UK
T: +44 (0)1334 655600 • F: +44 (0)1334 650006 • E: sales@relatedfluidpower.com

Mini Series
DC Power Unit
 Solenoid operated
 lowering valve assembly
 (example drawing)



Standard reservoir dimensions	
Steel cylindrical	
Capacity	P
2 litres	160 mm
3 litres	217 mm
4 litres	280 mm
5 litres	343 mm
6 litres	406 mm

Mini Series
DC Power Unit
 'P+T' only assembly
 (example drawing)



ORDERING EXAMPLE (as coded below)

Requirements: 24Vdc standard duty motor assembly, 1.1 cc/rev pump, relief valve (setting specified separately), special manifold assembly – 24Vac solenoid control (circuit to customer spec.), 7 litre rectangular horizontal reservoir, horizontally mounted power unit, weather proof motor cover.

Ordering Code

Z **S** **2ACW** **C11** **H** **PO25** **X** **T** **H** - *********

System code

Series
S - Mini power unit 152 mm

DC Motor assembly

1	- 12V
2	- 24V
3	- 36V
4	- 48V
7	- 72V
8	- 80V

- A - Std duty motor
- B - Heavy duty motor
- C - Std duty motor, thermal prot.
- D - Heavy duty motor, thermal prot.
- E - Fan cooled motor
- F - Fan cooled motor, thermal prot.
- G - Low duty motor
- H - Low duty motor, thermal prot.
- - A - Std solenoid switch (single pole)
- - B - Heavy duty sol. switch (single pole)
- - C - Std sol. switch (double pole)
- - D - Heavy duty sol. switch (double pole)
- - X - None
- - W - Weather proof motor cover
- - X - None

Pump group & displacement

Pressure balanced:

Group	Code	cc/rev
0.5	B63	0.63
1/4" BSP	B88	0.88
	B10	1.00

Group 1:

Code	cc/rev
C11	1.10
C13	1.30
C16	1.60
C21	2.10
C27	2.70
C32	3.20
C37	3.70
C42	4.20
C48	4.80
C58	5.80
C80	8.00

Fixed clearance:

Group	Code	cc/rev
200	F11	1.10
	F19	1.90
	F25	2.50
	F32	3.20
	F43	4.30

Relief valve (bar)

- L - 5- 60
- M - 20-130
- H - 40-250
- X - None

(Specify bar separately)

Control valve

- A O - Sol. op. NC
- A M - Sol. op. NC, MO detent
- A N - Sol. op. NC, MO non-det.
- A S - Sol. op. NC, filter screen
- A T - Sol. op. NC, MO detent, filter screen
- A U - Sol. op. NC, MO non-det., filter screen
- B O - Sol. op. NO
- B M - Sol. op. NO, MO screw
- B S - Sol. op. NO, filter screen
- B T - Sol. op. NO, MO screw, filter screen
- N O - Manual pull NC non-det.
- N S - Manual pull NC non-det., filter screen
- M O - Manual pull NC detent
- M S - Manual pull NC detent, filter screen
- V O - Needle valve
- V K - Needle valve, knob
- L X - Lever op. NC lift & lower, micro switch
- X X - 'P+T' only
- P O - Flange on manifold valve assembly present (specify separately)

Special and std circuits available on request

- 12 - 12Vdc
- 24 - 24Vdc
- 25 - 24Vac
- 11 - 110Vac
- 22 - 240Vac
- XX - None

List of abbreviation: Sol. op. = Solenoid operated, NC = Normally closed, NO = Normally open, MO = Manual override

Flow control

- F - Pressure compensated flow control (on lower)*
- X - None

* (Specify lpm separately)

Reservoirs

S series

- A - 2 litre plastic
- B - 3 litre plastic
- C - 4 litre plastic
- D - 5 litre plastic
- E - 6 litre plastic
- F - 7 litre plastic
- H - 2 litre cyl. steel
- J - 3 litre cyl. steel
- K - 4 litre cyl. steel
- L - 5 litre cyl. steel
- M - 5 litre square steel
- S - 6 litre cyl. steel
- T - 7 litre square steel
- U - 9 litre square steel
- V - 12 litre square steel
- W - 18 litre square steel horizontal only
- Y - 18 litre square steel
- Z - 27 litre square steel
- N - Neck flange only
- X - None

Mounting

- H - Horizontal
- V - Vertical

Internal code

After selecting your above power unit or if you are having trouble, please contact us by fax or phone and we will assist with your enquiry or endeavour to help you produce a unit to meet your requirements. Whilst every endeavour has been made to ensure accuracy, this data sheet cannot be considered to represent part of any contract, whether expressed or implied. We reserve the right to amend specifications at our discretion.

Our Company

Related Fluid Power Ltd have 30 years experience in the design and manufacture of hydraulic controls and AC/DC power units for the mobile and industrial sectors. Operating from our factory in Cuparmuir, Fife (UK), we are constantly striving to improve and increase our production capacity; we also utilise the latest state of the art 2D and 3D CAD and CNC manufacturing capabilities.

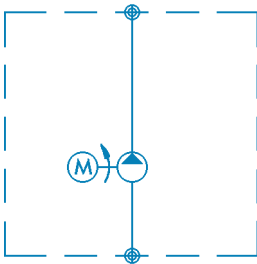
In the present industrial and mobile hydraulic industry, AC/DC hydraulic power units are providing companies with the flexibility to produce simple as well as complex systems with the greatest of ease. RFP can provide the industry with this flexibility and at the same time meet customer requirements efficiently and effectively.

Maintaining a close relationship with our customers, as well as an understanding of their needs, is a commitment equally important to us and helps to set us apart. This is why we have fostered and encouraged a development of skills so we can help our technical and sales people market our power units in the hydraulic industry.

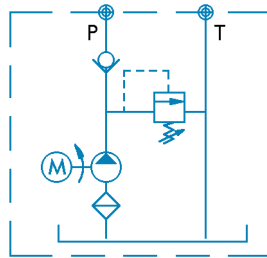
The Micro and Mini Series power units are self-contained motor-pump-reservoir systems offering a wide range of pump outputs and with optional cylindrical steel or rectangular plastic/steel reservoirs. The power units are available in DC or AC form and cover a standard motor range of 150W-800W DC, 0.37kW-4kW AC. Standard as well as custom controls, some of which are shown below.

Standard Applications

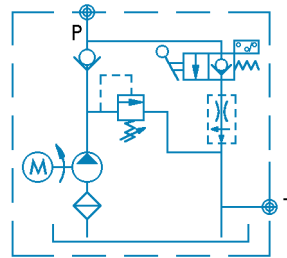
Motor/Pump unit



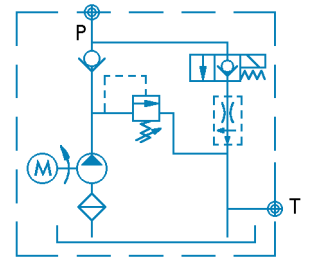
Pressure and return
Relief valve, check valve



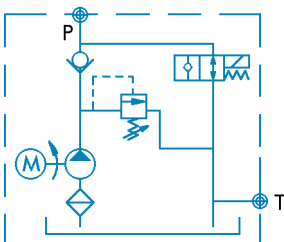
Manual lift, check & lower
Relief valve, check valve
** optional flow control



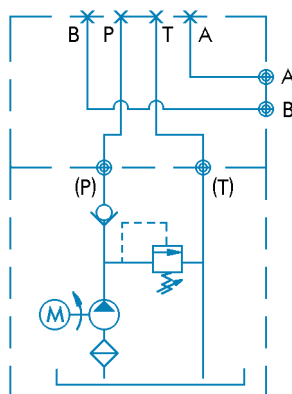
Solenoid/N.C. lift, check & lower
relief valve, check valve
** optional flow control



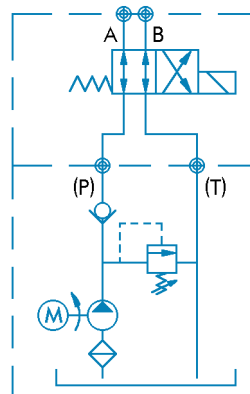
Solenoid/N.O. lift, check & lower
relief valve, check valve
** optional flow control



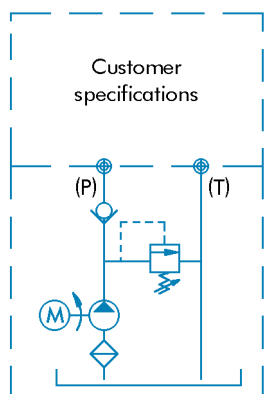
// Cetop 3, subplate



Solenoid, 2 position 4 way



Custom (please ask)



// Cetop 3, directional valve can be supplied if required

** Flow control can be supplied in two options: 1. Fixed pressure compensated flow control (fitted internally)
2. In-line adjustable flow control